

Enquiry Ordering

Company stamp/signature: _____

Customer number: _____

Contact person: _____

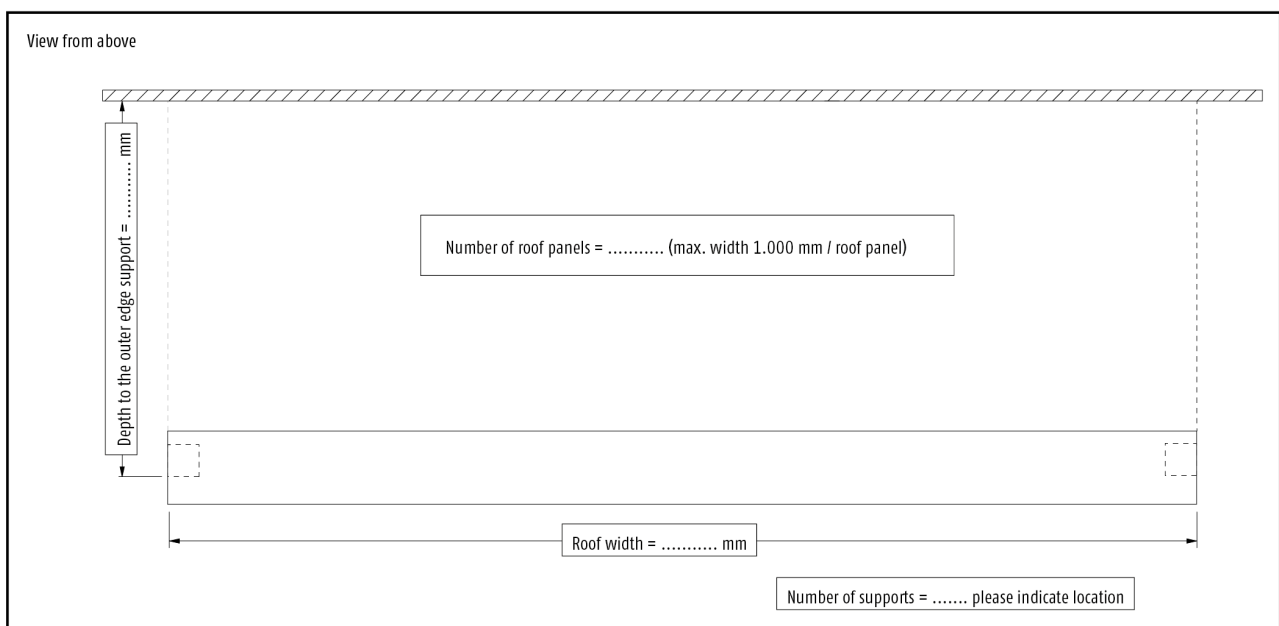
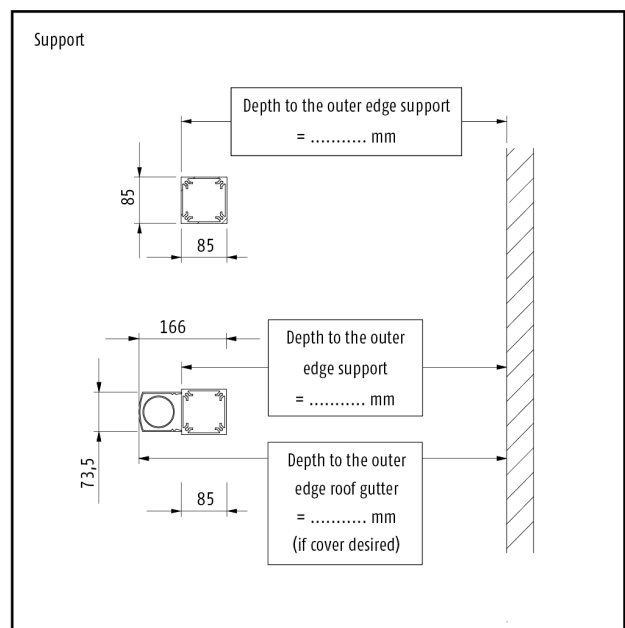
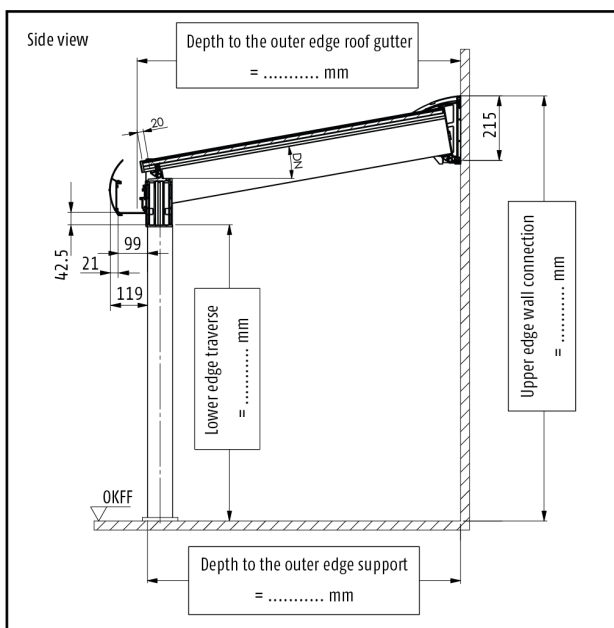
Telephone: _____

Offer number: _____

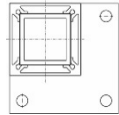
Commission: _____

Postcode mounting location: _____

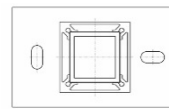
Standard snow load: 65 kg/m² 85 kg/m² 125 kg/m² 160 kg/m² 230 kg/m² 290 kg/m²
 350 kg/m²



Support feet:



Amount _____



Amount _____

Ground level _____ mm

(for adaptation of the support length on the construction site)

Design gutter:

square

round

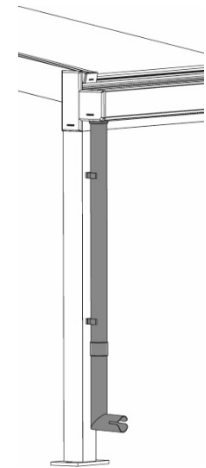
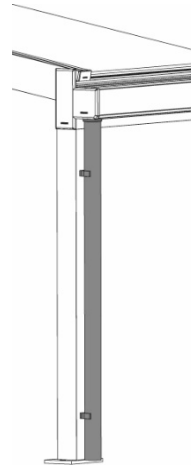
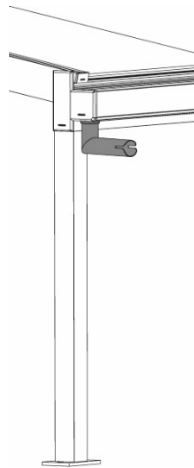
Drainage:

Set 1

Set 2

Set 3

(A second downpipe is recommended for a roof surface area of 20 m² or more!)



Set 1 (Screw supports incl. seal, 90° spout, aluminium in roof colour)

Set 2 (Screw supports incl. seal, downpipe 2,500 mm, 2 clamp mounts, aluminium in roof colour)

Set 3 (Screw necks incl. seal, downpipe 2,500 mm, 87° pipe bend with outlet, 1 socket, 2 clamp mounts, aluminium in roof colour)

Aluminium covering panel in the roof colour for set 2 or 3

Cover panel also for supports without a downpipe

Position of drainage:

(External view)

left

right

middle (only possible if there are 3 or more support)

Skylight:

left

right

Glass dividing transom skylight:

yes

no

Glazing designed for:

8 mm

10 mm

12 mm

Fillings/multi-skin sheets for:

16 mm

24 mm

Glazing bars for division of the glass:

yes

no

Colour:

Pre-anodization

RAL _____

Special colour: _____

Special equipment:

Wall-side supports with wall-side purlin

Lighting:

LED spots Number per rafter: _____

Number of rafters with spots: _____

Dimm controller

Cable duct wall connection

Substructure elements:

front: SF20 SF22 SF30
 SF42 SF45

left: SF20 SF22 SF30
 SF42 SF45

right: SF20 SF22 SF30
 SF42 SF45

Please complete and send the corresponding system order form!

Please add layout or elevation sketches and notes! (Note: use external view!)